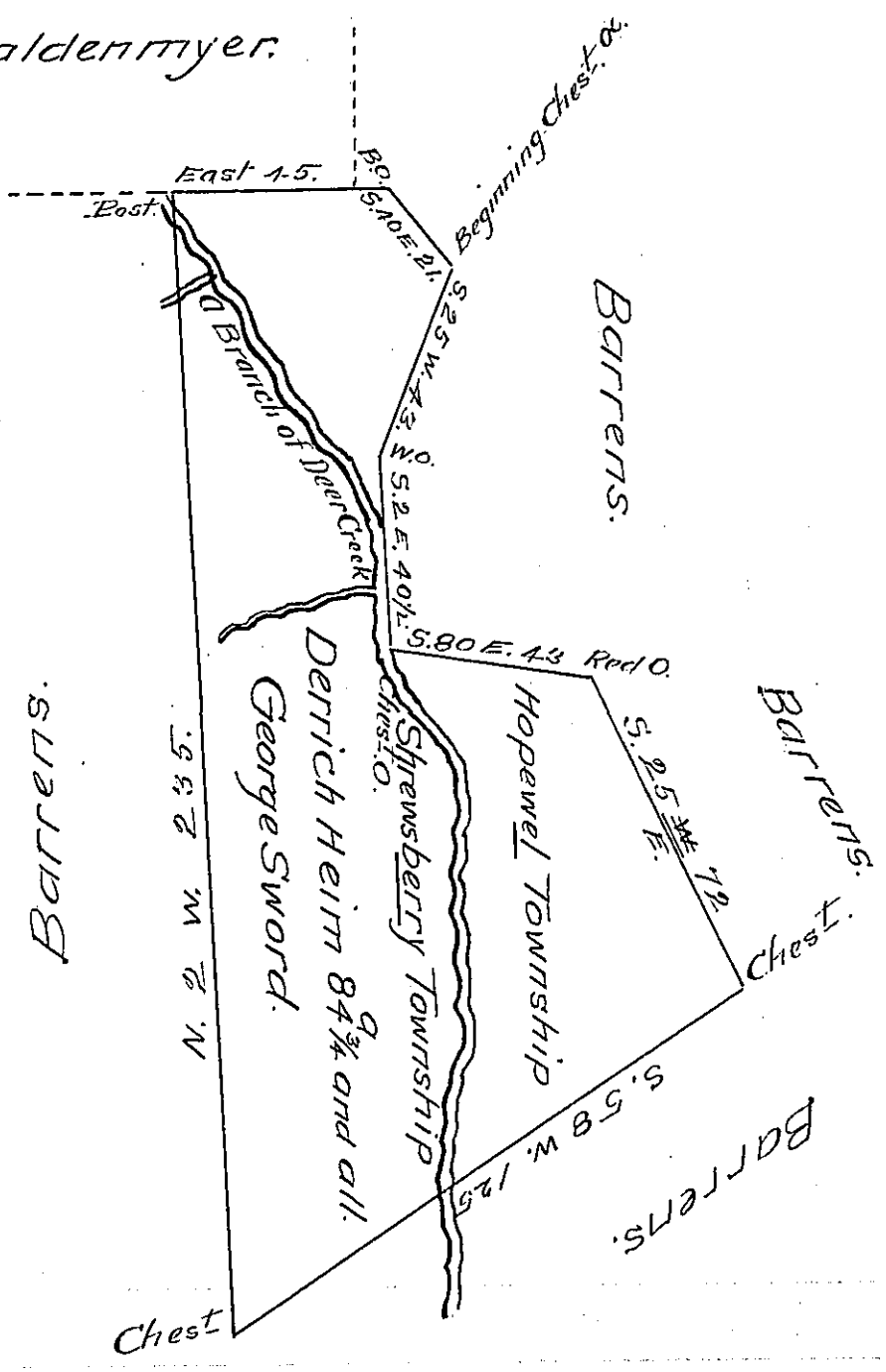


Geo. Waldenmyer.



Situate part in Shrewsbury and part in Hopewell Townships York County Surveyed on the 3^d day of the 7th Month 1772 for George Sword in pursuance of a Warrant for 75^a Dated the 20th of November 1771.

Wm. Matthews Dy. Sr.

To John Lukens Esq. }
Surveyor General }

IN TESTIMONY that the above is a copy of the original remaining on file in the Department of Internal Affairs of Pennsylvania, made conformably to an Act of Assembly approved the 16th day of February, 1833, I have hereunto set my Hand and caused the Seal of said Department to be affixed at Harrisburg, this Seventeenth day of October 1906.

Isaac R. Brown
Secretary of Internal Affairs.